

Newsletter

Holiday Greetings! from all of us at Timbercraft

In timber frame construction we decorate with cut evergreens all year long - not just Christmas time. For centuries, it has been a tradition to attach a fir bough to the highest point of a frame at the conclusion of raising day.



We do not know the origins of this custom but we believe the green branch was meant to celebrate the life of the tree and show gratitude to spirits of the forest for providing the material to build shelter.

Timbercraft Community 2004

Inside This Issue

Timbercraft Community 2004
Healing Community Wounds
Protecting Community Resources
Community Building
Our Growing Community
Timber Frame Ambassadors

This Holiday Season our thoughts naturally turn toward the people who are important to us. As we look for opportunities to express our affection and appreciation to family and friends we are reminded that people who work together also create community. This year, as Timbercraft celebrates its 25th anniversary, we are mindful of the many home owners with whom we have worked. Each one is a valued member of our extended community.

So, to each of you who chose Timbercraft to help design and build your home, we thank you very much. You have helped us enrich our knowledge of the craft of timber framing

and you have provided us with many opportunities to experience the satisfaction of helping to create beautiful, comfortable, sturdy, timber frame homes. We also appreciate the gift of your time and your hospitality. For those of you who frequently open your homes to visitors and occasionally tolerate disruptions to your households caused by architectural photographers, we are truly grateful for your generosity. We could not grow and flourish without you.

Be sure to stop by the office if you are in our neighborhood. We would love to know what's new with you. You can keep track of us by visiting www.timbercraft.com.

If you would like to have a CD that features photos of recently completed timber frame homes, let us know. We'll be happy to send you a copy.

Happy Holidays to All

Judith and Charles Landau

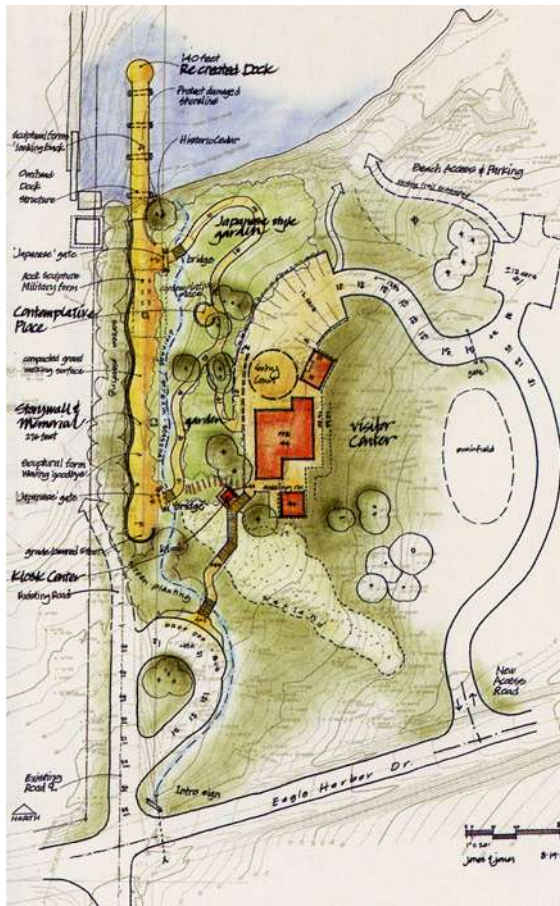


Healing Community Wounds

Nidoto Nai Yoni – Let It Not Happen Again

The Bainbridge Island WWII Nikkei Internment and Exclusion Memorial Committee and the City of Bainbridge Island are working to create a memorial to honor the individuals and families who experienced this tragic moment in history. For Bainbridge Island citizens of Japanese descent, the first steps away from freedom began in 1942 at the old Eagledale Ferry Landing, when 276 Bainbridge Island residents were removed from their homes, farms and businesses. They were shipped to concentration camps in the deserts of Idaho and California where they remained until the end of the war.

The Nidoto Nai Yoni National Memorial will “*honor those who suffered, and cherish the friends and community who stood beside them and welcomed them home, and hopefully it will inspire Americans to safeguard the constitutional rights of all.*”



Nidoto Nai Yoni National Memorial Site Plan

Inside This Issue

Timbercraft Community 2004

Healing Community Wounds

Protecting Community Resources

Community Building

Our Growing Community

Timber Frame Ambassadors



Japanese Gate and Volunteer Timber Framers

So far most of the work on the Nidoto Nai Yoni Memorial has been done by volunteers. The Trust for Public Lands and the Bainbridge Island Land Trust are working closely with State and Federal Government agencies and community volunteers to reclaim the land and raise funds for the buildings. The design for the \$4,000,000 interpretive center and memorial park was contributed by architect John Paul Jones.

The first “symbolic” structure to be placed on the property is a Japanese Gate designed by John Buday and built by volunteer timber framers from Bainbridge, Bellingham, Port Townsend and Whidbey Island, representing the Outreach Program of the Timber Framers’ Guild of North America.

Tax-deductible donations can be sent to:
Bainbridge Island WWII Nikkei Internment and Exclusion Memorial Committee
PO Box 10355
Bainbridge Island, Washington.
98110-0355
(206) 855-9038.

Protecting Community Resources

Timbercraft architect Susan Payne writes:

“This year I became a member of the **Jefferson Land Trust**, a non-profit organization that helps set aside wetlands and woodlands to spare future development. The Land Trust encourages donations of land and raises funds to purchase land for conservation purposes, and they try to link parcels so they will serve effectively as wildlife corridors. Since I value the preservation of wild spaces I decided I ought to help out and I recently volunteered at the annual Land Trust Auction. The Auction and the Festival of Trees, held in the spring, bring the local community together in support of issues they care deeply about. Both events are well attended, successful fund raising events”.

Timbercraft owners, Charles and Judith Landau, also support the Jefferson Land Trust because...

“Land is the one thing we will never be able to make more of.”



Inside This Issue

Timbercraft Community 2004

Healing Community Wounds

Protecting Community Resources

Community Building

Our Growing Community

Timber Frame Ambassadors



Admiring visitors at the Festival of Trees

Community Building



Future home owners working on a foundation -part of the Kitsap Housing Authority project.

In June 2002, timber framer Russ Seiler and his wife Priscilla and human resource manager and bookkeeper, Katie Whalen, and her son Leland joined a group of 12 families working cooperatively together to build each other's three and four bedroom homes.

Katie describes all the future home owners as “very motivated

people who do not have a down payment for a home, but are able to make monthly mortgage payments.” To participate in the home

building program, each family must be willing to contribute 30 hours of sweat equity per week for a year, with the help of their family and friends. Timber Frame Designer Craig Colomb and Craftsman Darren Watson have contributed work on Katie's house which is already in its 5th month of construction. She and Leland expect to move in this summer. Russ and Priscilla will break ground and begin installing their foundation for their house this month.

The cooperative home building program, sponsored by the [Housing Authority of Kitsap Co.](#), is considered one of the best affordable ownership programs in the United States. Families receive on the job training from an on site general contractor. They learn how to pour a concrete foundation, use a Skilsaw, read blueprints and lift walls. When the families move into their new homes in June 2005 each will have earned \$40,000 worth of equity and a guaranteed low interest mortgage from the US Department of Agriculture.

One new home builder describing her experience admitted that “learning construction skills was the easy part. Learning to get along together without finger pointing was much harder.” Another described her experience as “a little like the Survivor TV show. We were strangers but we had to learn to get along and work together as a group.”

This self-help program is an excellent model because 8 to 12 new homes can often be easily integrated into existing neighborhoods. Some residents of the original Hamilton Heights Development were initially concerned about their “low-income neighbors.” Now they are so “blown away” by the quality of the people involved in the program that they organized a neighborhood Christmas party to welcome their new neighbors.

Inside This Issue

Timbercraft Community 2004

Healing Community Wounds

Protecting Community Resources

Community Building

Our Growing Community

Timber Frame Ambassadors

Our Growing Community



Timbercraft Christmas party 2004

This April we welcomed baby Ryan Jay Lang. Congratulations once again to Haley and Earl Lang, Ryan's mom and dad. Ryan displaces Joseph Meyering, born in June 2003, as our youngest apprentice timber framer. Michele Meyering, our totally amazing office manager brought Baby Joe to the

Timbercraft office every day for the first six months of his life.

"Joey" spent the day happily napping and cooing next to his mom's desk while Michele took your calls and kept track of the details that make our lives run smoothly.

Inside This Issue

Timbercraft Community 2004

Healing Community Wounds

Protecting Community Resources

Community Building

Our Growing Community

Timber Frame Ambassadors

People who joined the Timbercraft Team this year are:

Cris Gunter, AIA - Cris is the new *Coordinator of the Timbercraft Design Team*

Chris Norman – Chris *facilitates construction, bids jobs and tracks work in progress.*

Russ Seiler - *Journeyman Carpenter and Timber Framer*

Mitch Clanton – *Journeyman Timber Framer*

David Reade – *Apprentice Timber Framer*

Winston LaJamb – *Machinist*

To read about all the members of the Timbercraft Team:

http://www.timbercraft.com/tc_team.html

Associates:

Paul Kessler, *Director of the Timbercraft Professional Partner Program*, represents Timbercraft in the Mountain States. Paul is available to answer your questions about representing Timbercraft. Contact pkessler@earthlink.net



Paul Kessler

<http://www.timbercraft.com/ppp.html>

Craig Threshie, Architect. – Craig's architectural firm, Alpen Environs, represents Timbercraft in the Truckee-Tahoe area of northern California. Learn more about Alpen Environs at www.alpenenvirons.com.

Lorraine Riess, of Residential Design Associates in Los Gatos, CA represents Timbercraft in Mendocino, Santa Clara and Sonoma Counties of California. She may be reached at lcfriess@aol.com to discuss your project design ideas.

Richard Hall of GBS Inc. is now representing Timbercraft in the Counties of Park, Big Horn, Hot Springs and Washakie in the State of Wyoming and Carbon County in the State of Montana. Richard can be contacted at gbsinc@vcn.net to discuss your project design ideas.

Jerry Rouleau, Marketing Consultant. Rouleau Associates conducted a marketing analysis of Timbercraft in January of 2004. The analysis helped us to examine the company's position in the market place and install a better system for communicating with prospective timber frame home owners. One unexpected benefit of the work with Jerry Rouleau was our introduction to the network of business that makes up the Systems Built Housing Industry.

Timber Frame Ambassadors

The first timber frame raised in a community is likely to draw a crowd of amazed and delighted onlookers.

As bents were raised and heavy timbers were secured with mortise and tenon joinery and hardwood pegs, framers enjoyed demonstrating a different kind of 21st century technology in the community that spawned Microsoft.



Crossroads Pavilion, Bellevue, Washington

Inside This Issue

Timbercraft Community 2004

Healing Community Wounds

Protecting Community Resources

Community Building

Our Growing Community

Timber Frame Ambassadors

To see other Timbercraft frames raised in 2004 visit the [“New Projects”](#) page.